

# Portable and Compact Extraction Units Fume Eliminator

FE840 PLUS





# Table of Contents

Declaration of Conformity .....	4
Figures .....	5
1 Preface.....	6
2 Notices.....	6
3 Description .....	6
3.1 Function .....	6
3.2 Technical Data .....	7
4 Fume Eliminator Operation .....	7
4.1 Operation .....	7
5 Maintenance .....	7
5.1 Changing Carbon Brushes.....	7
5.2 Changing Filter and Emptying the Coarse Separator .....	8
5.3 Spare Parts .....	8
6 Recycling.....	8
Notes.....	8

## Declaration of Conformity

### Declaration of conformity

We, AB Ph. Nederman & Co., declare under our sole responsibility that the Nederman product:

Fume Eliminator (Part No. \*\*, and stated versions of \*\*) to which this declaration relates, is in conformity with all the relevant provisions of the following directives and standards:

#### Directives

2006/42/EC, 2014/30/EU, 2014/35/EU.

#### Standards

EN 60204-1, EN ISO 12100, EN ISO 15012-1, EN 61000-4-4.

The name and signature at the end of this document, is the person responsible for both the declaration of conformity and the technical file.

\*\*

2161419

AB Ph. Nederman &  
Co. P.O. Box 602  
SE-251 06  
Helsingborg Sweden

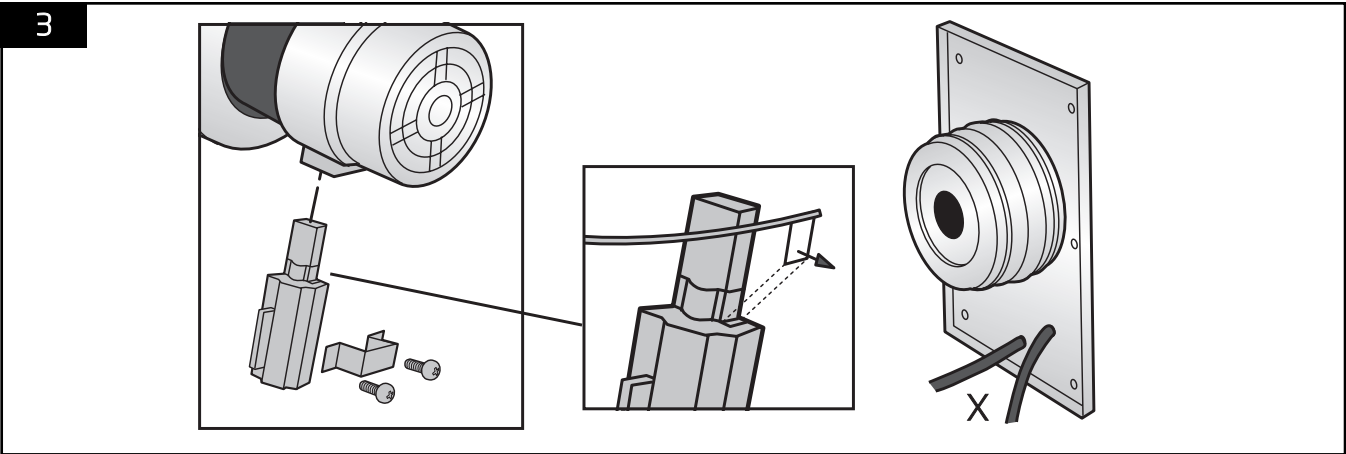
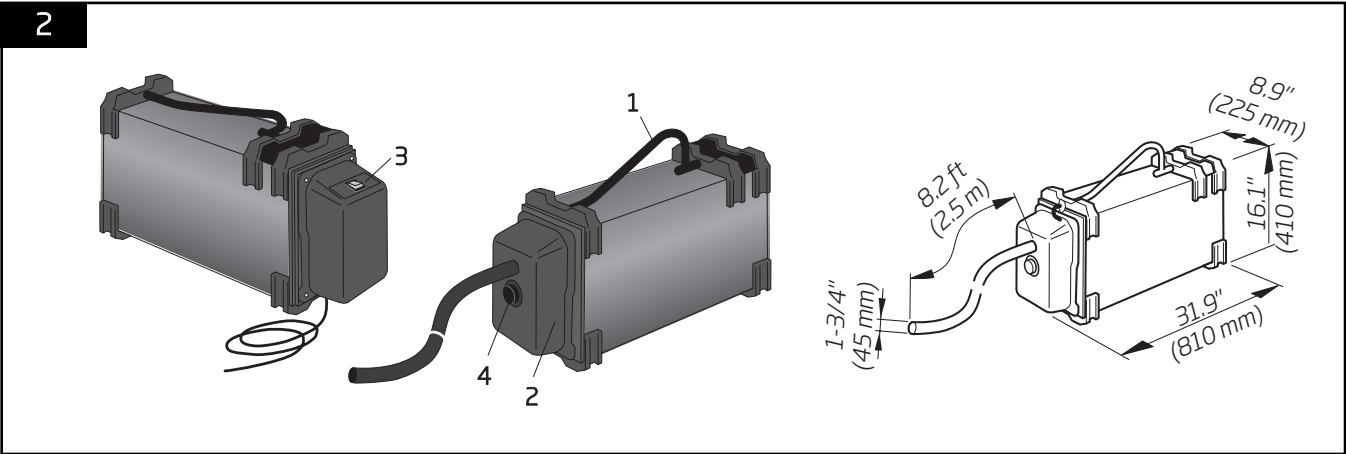
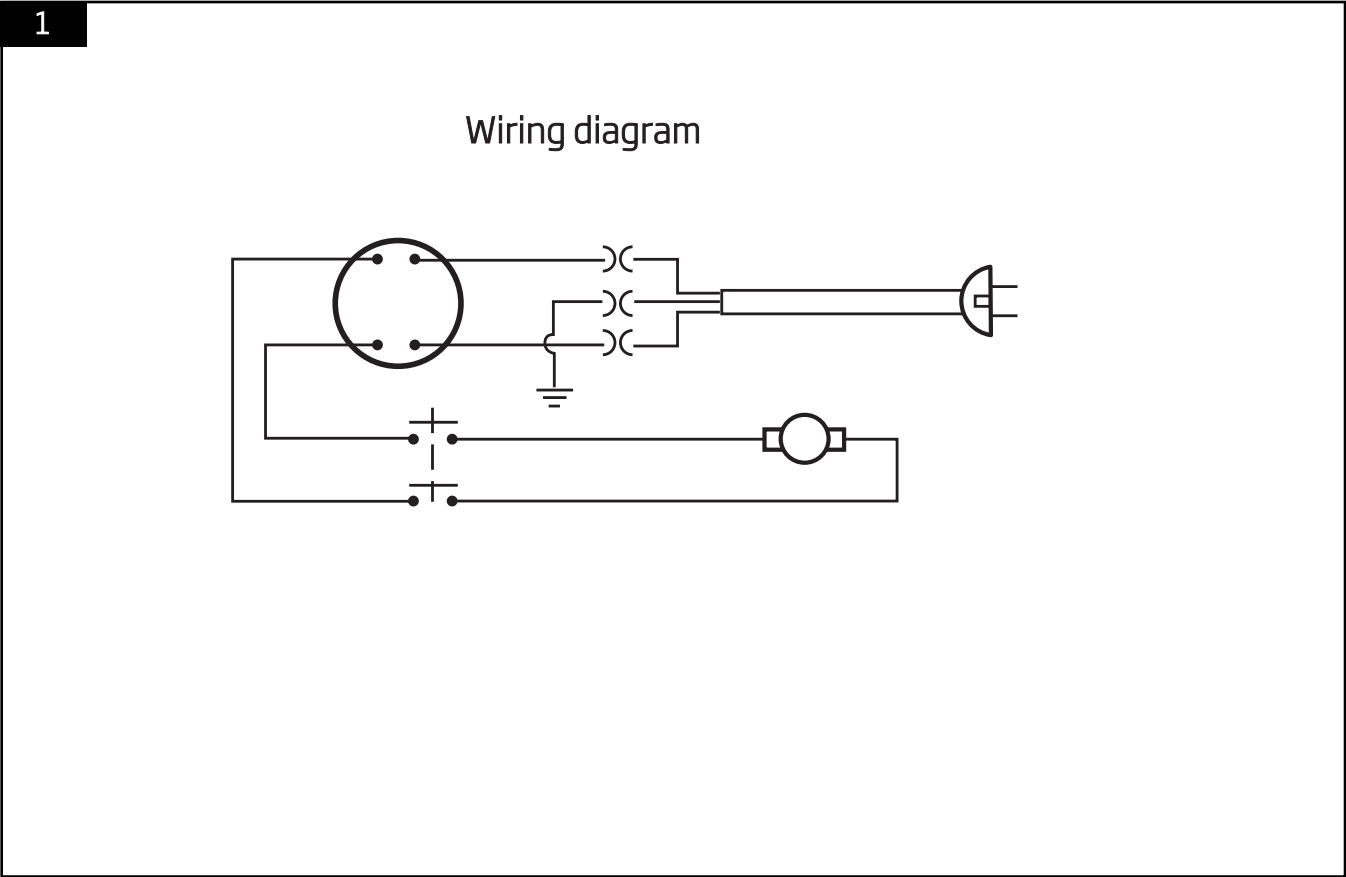


Lars Nagy  
Manager Product  
Centre 2016-08-15





Figures



## 1 Preface

This manual is for the proper installation, use and maintenance of this product. Please review it carefully before using this product or completing any maintenance. Replace the manual immediately if lost.

All installation, repair and maintenance should be completed by qualified personnel using only original spare parts. Contact the nearest authorized distributor or Nederman for advice on technical service and obtaining spare parts.

Nederman continuously improves its products' design and efficiency through modifications, and reserves the right to do so without introducing these improvements to previously supplied products. Nederman also reserve the right to, without previous notice, modify data and equipment as well as operating and maintenance instructions.

## 2 Notices

This document contains important information that is presented either as a warning, caution or note. See the following examples:



### **WARNING! (injury)**

Warnings indicate a potential hazard to the health and safety of personnel, and how that hazard can be avoided.

### **CAUTION! (risk)**

Cautions indicate a potential hazard to the product but not to personnel nor how that hazard can be avoided

Notes contain information important to personnel

## 3 Description

### 31 Function

See Figure 2 Page 5.

1. Handle and lock for the coarse separator
2. Coarse separator
3. Power switch
4. Exhaust

## 3.2 Technical Data

Table 3-1: Technical data

	840 NANO
Dimensions	See Figure 2 page 5
Noise level	75 dB(A) ISO 11201
Weight	30 lbs (13.6 kg)
Voltage	120V 60 Hz (8.3 amps)
Power	1.3 hp (1 kW)
Max. Working Pressure	64 in. w.g. (16 kPa)
Air Flow Capacity	88 cfm (150 m <sup>3</sup> /h)
Filter Area	54 ft <sup>2</sup> (5.3 m <sup>2</sup> )
Filtration Efficiency	F9 - W3 - MERV 14 - 99% (carbon reinforced nanofiber)
Hose Diameter	1-3/4" (45 mm)
Hose Length	8.2 ft (2.5 m)

## 4 Fume Eliminator Operation

4.1 See Figure 2 page 5

FE840 PLUS (Manual)

Switch (3) to ON position. The unit will work continuously.

## 5 Maintenance

Installation, repair and maintenance work must be completed by qualified personnel using only original Nederman spare parts. Please contact your nearest authorized distributor or Nederman for advice on technical service.

**NOTE!** The service intervals in this chapter are based on the unit being professionally maintained.

### 5.1 Changing Carbon Brushes



**WARNING!** Risk of personal injuries.

- Remove the power cable plug before performing any motor maintenance.
- The carbon brushes are to be replaced by a qualified electrician. Instructions for proper fitting are included with every brush set.

### 5.2 Changing Filter and Emptying the Coarse Separator

See Figure 2 Page 5. A new filter needs to be installed when the suction becomes inadequate. The coarse separator usually needs to be emptied only when the filter is changed, but heavy use of some types of electrodes may require more frequent emptying.

#### How to change filter:

1. Switch off the unit. Remove suction hose.
2. Turn handle (A) down and remove the coarse separator (C). (The handle works as a lock for the coarse separator).
3. Pull out and dispose the old filter.
4. Insert a new filter.
5. Unscrew the locking screw (D) and remove outer part.
6. Empty the coarse separator.
7. Check the separator rubber seal for any signs of damage.
8. Reassemble the coarse separator. Lock the handle.

*NOTE! The coarse separator is locked partially when the handle is in the upright position and fully locked when handle it is down position.*

### 5.3 Spare Parts

Contact your nearest authorized distributor or Nederman for advice on technical service or if help with spare parts is required. Also visit [www.nederman.com](http://www.nederman.com).

When ordering spare parts always state the following:

- Part number and control number (see the product name plate)
- Description and name of the spare part (see [www.nederman.com](http://www.nederman.com)).
- Quantity of the parts required.

## 6 Recycling

The product has been designed for component materials to be recycled. Its different material types must be handled according to relevant local regulations. Contact the distributor or Nederman if uncertainties arise when scrapping the product at the end of its service life.

## Notes

[illegible]

# Nederman

The Nederman Group is one of the World's leading suppliers of products and solutions within the environmental technology sector focusing on industrial air filtration and recycling. These products and solutions reduce the environmental impact of industrial production and create safe and clean working environments while boosting production efficiency.

The group's offering covers the design stage through installation, commissioning and servicing with subsidiaries in 29 countries and agents and distributors in over 30 countries.

Nederman is ISO 9001 and 14001 certified and develops and produces in its own manufacturing and assembly facilities in Europe, North America and Asia.

## Nederman Service Capabilities

Nederman has certified service partners trained extensively in servicing our machinery. Make sure to choose a certified technician to service your Nederman equipment as they have the correct tools and knowledge to solve any machinery issues and improve its performance. Be sure to ask if your technician is certified by Nederman.

Our services for fume & dust collection systems are customized to your particular needs. We work with you to understand your needs, then develop a program to meet your specific needs. Our services include: *(not all services available in all locations)*

- Bag & Filter Change-outs
- Bag Selection Recommendations
- Collector Re-builds
- Dye Testing for Leakage
- Electrical Tests - Current, Voltage
- Emergency Call-outs
- Filter Media Analysis
- Mechanical Survey and Repair
- Multi-year Contracts
- New Collector Start-up Service
- On-going Technical Support
- Preventative Maintenance Programs
- Repair and Replace  
Gauges/Timers/Valves
- Stack Emission Testing
- Training Programs
- Troubleshooting / Auditing
- Velocity, Pressure and Temperature Tests
- Written Service Report

## Customer Service and Technical Support

Nederman Corporation USA  
4404-A Chesapeake Drive  
Charlotte, NC 28216  
336-821-0800

[www.nederman.com](http://www.nederman.com)